

EXERCISE

TORCHWOOD DENMARK



● Ignition

Drought Conditions
30 km/hr northwesterly wind
30% relative humidity

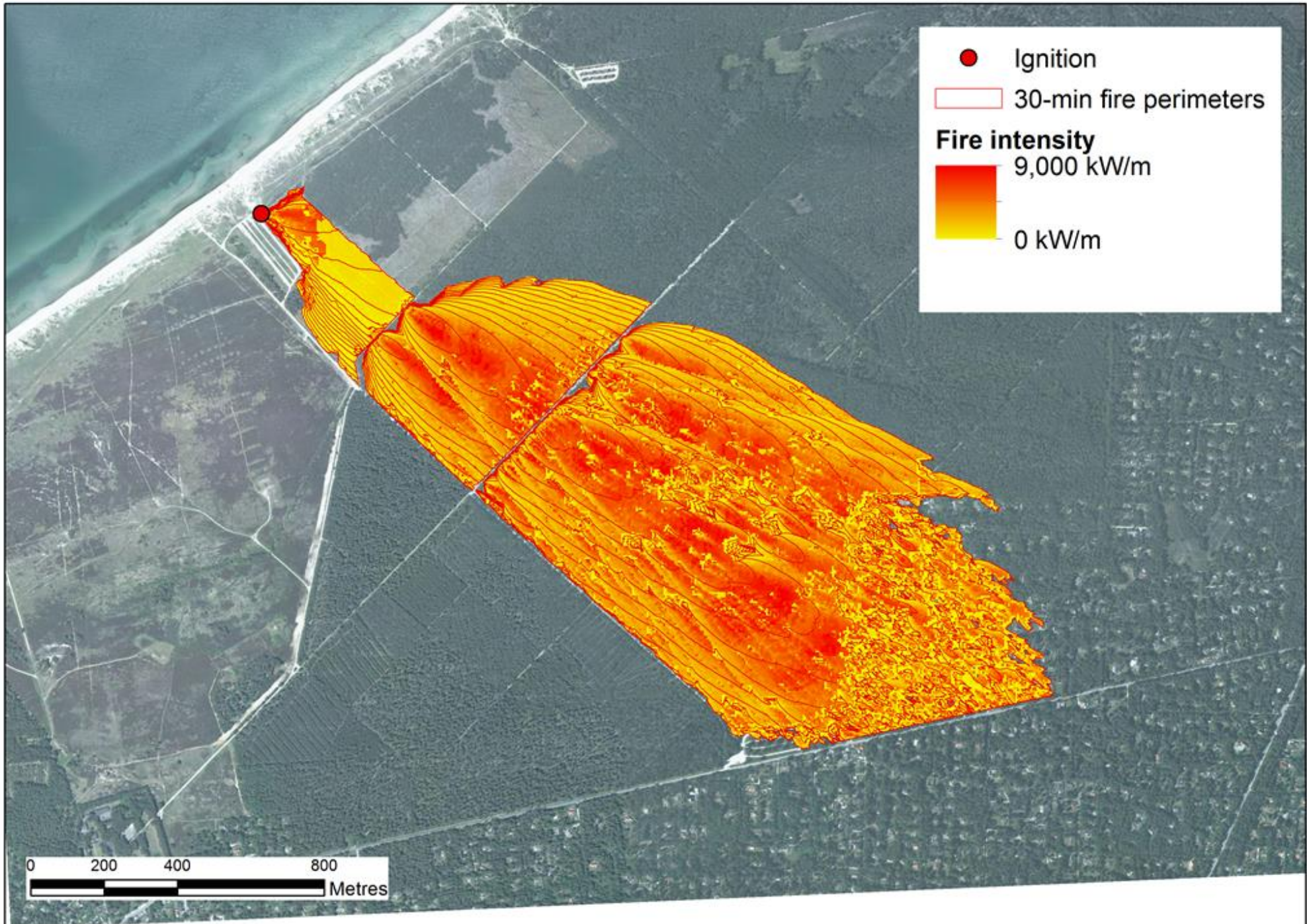
0 200 400 800
Metres



● Ignition

□ 30-min fire perimeters

0 200 400 800
Metres

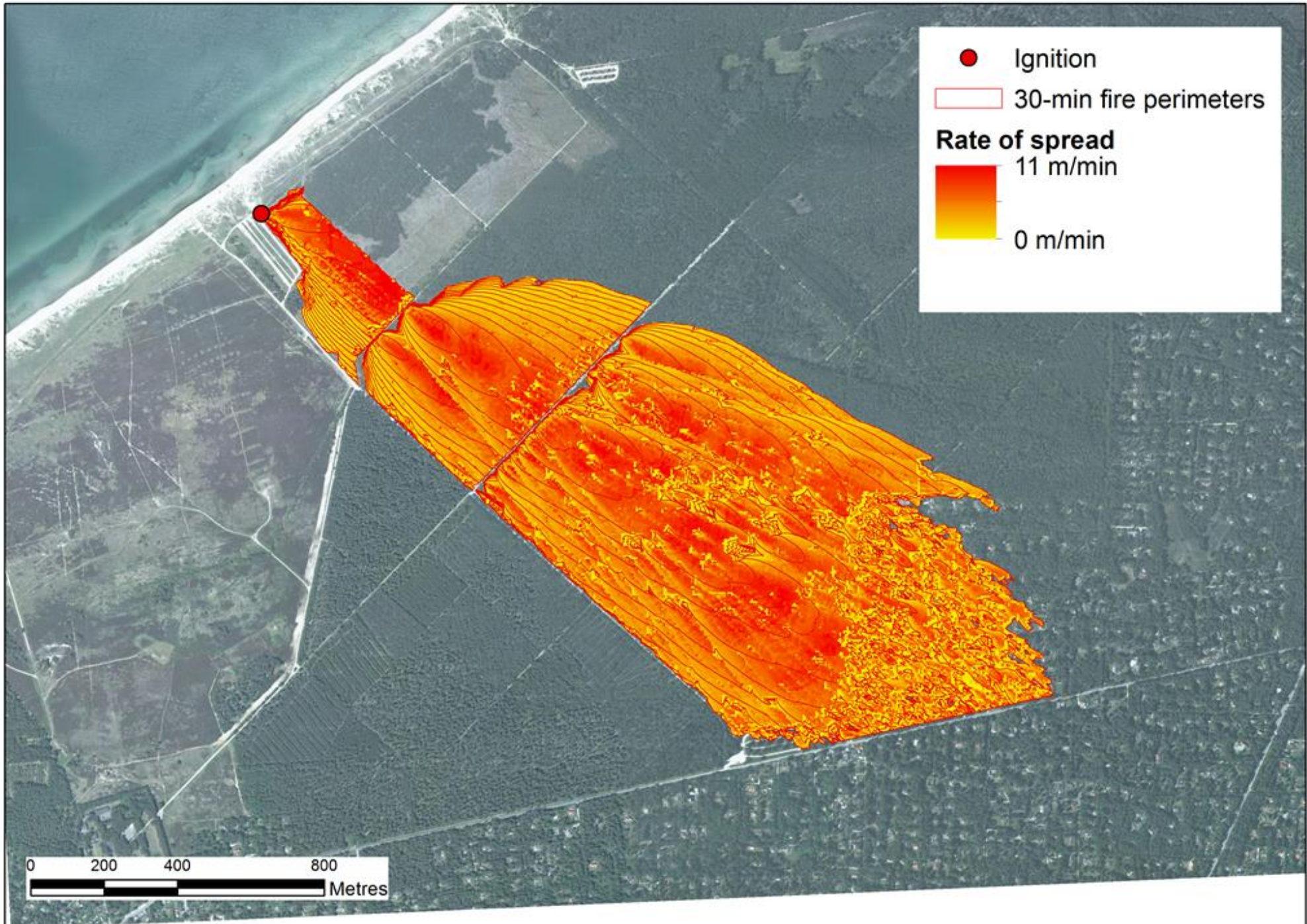


- Ignition
- 30-min fire perimeters

Fire intensity

- 9,000 kW/m
- 0 kW/m

0 200 400 800
Metres



- Ignition
- 30-min fire perimeters

Rate of spread
11 m/min
0 m/min

0 200 400 800
Metres

Questions?

