

# EXERCISE

---

## TORCHWOOD

---



# OBJECTIVES

DEMONSTRATE AN UNDERSTANDING  
OF WILDFIRE INCIDENT MANAGEMENT



# INFORMATION SOURCES

THIS PRESENTATION  
EXERCISE PACK PROVIDED  
COURSE NOTES



# BRIEF

**The fire call was placed by a Forestry Commission Manager who is also a member of the Specialist Wildfire Team**





# BRIEF

They have informed Control that the fire needs a strong initial attack



# BRIEF

It is in a high risk area where in 1990 a fire burned for three weeks



# BRIEF

Fire control has therefore mobilised the following resources:



# BRIEF

SIX PUMPING APPLIANCES  
TWO FOGGING UNITS  
10 MEMBERS OF THE SPECIALIST TEAM



# BRIEF

SIX PUMPING APPLIANCES  
TWO FOGGING UNITS  
10 MEMBERS OF THE SPECIALIST TEAM



# BRIEF

**SIX PUMPING APPLIANCES  
TWO FOGGING UNITS  
10 MEMBERS OF THE SPECIALIST TEAM**



# BRIEF

You are to manage the incident with these resources



# TASK

Use one of the maps to identify the different alignments





# TASK

On another map provide a footprint of fire spread over two, four, and eight hours



# TASK

Within the footprints identify the trigger points that will results in changes to fire behaviour



# TASK

Identify the areas where extreme fire behaviour is likely  
(consider fuel, its arrangement and alignment)



# TASK

Identify windows of opportunity



# TASK

Identify where there are opportunities to use:

- Direct attack
- Indirect attack



# INFORMATION

The temperature is 19°C  
The RH is 49%



# INFORMATION

The weather forecast is fine and sunny with temperatures increasing to 27°C by 1400 hrs

The wind is 18 km/hr from the SOUTH

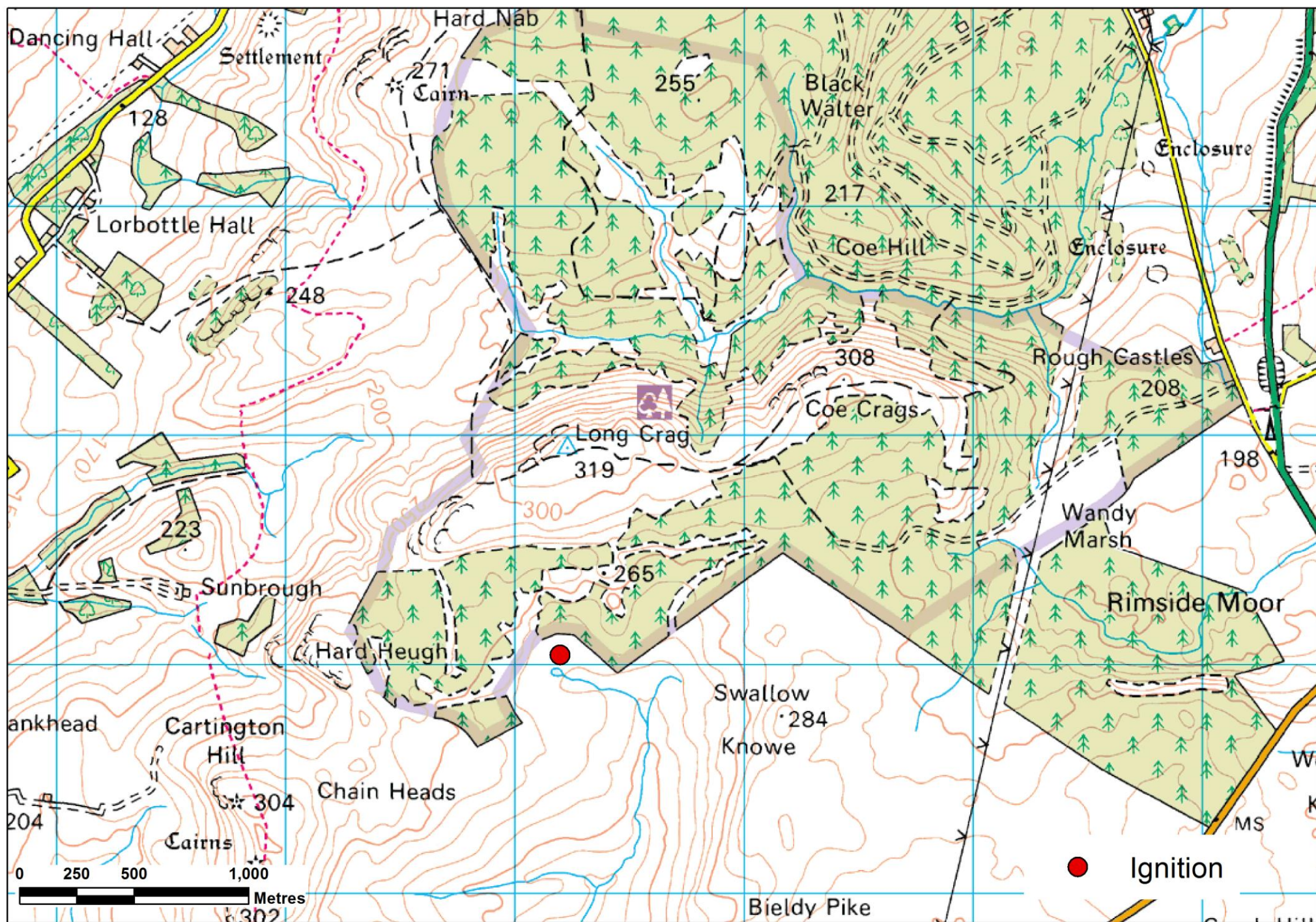


# INFORMATION

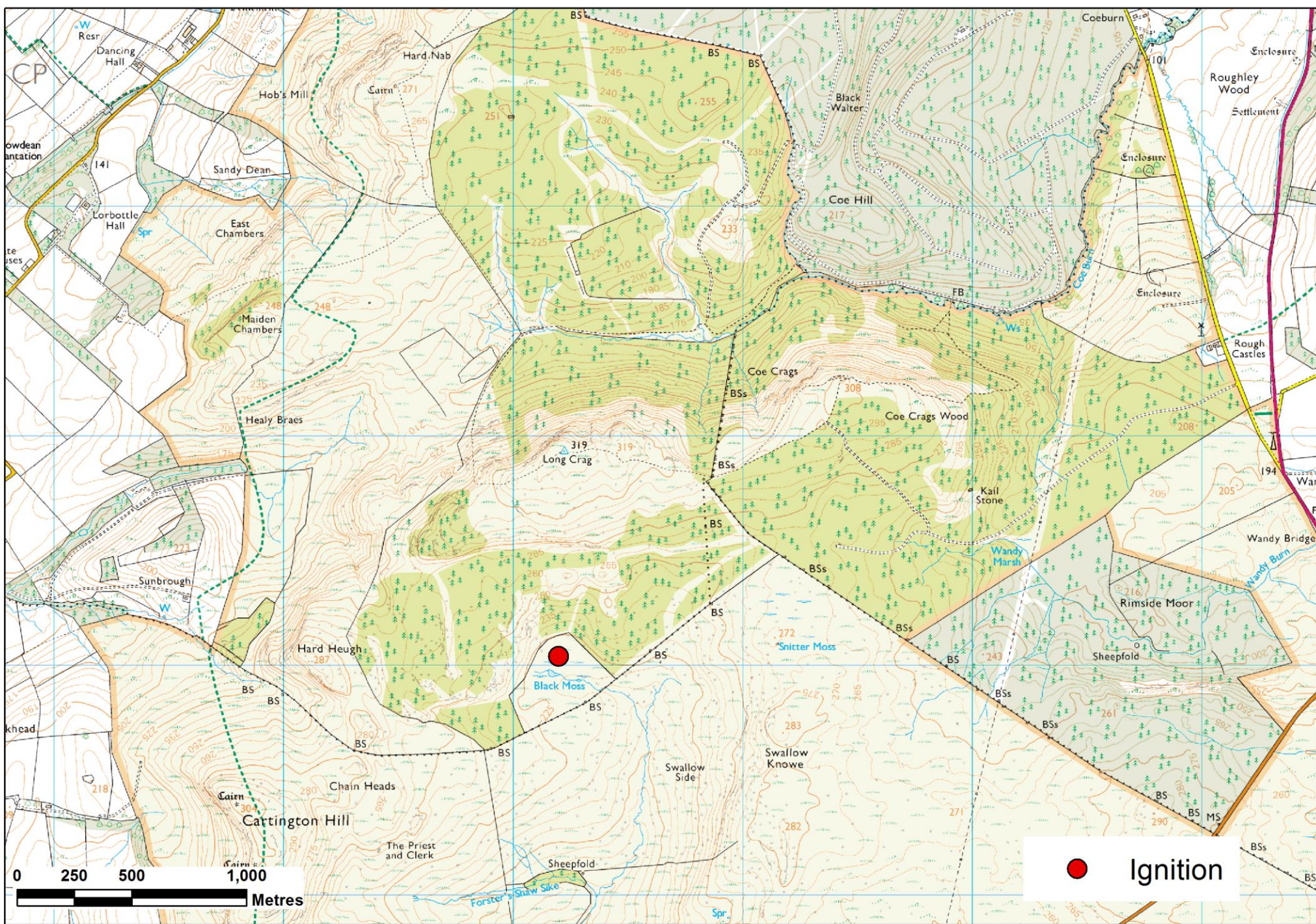
**SM Bennett arrives at 1145 hrs and a police helicopter takes him on a fly over**



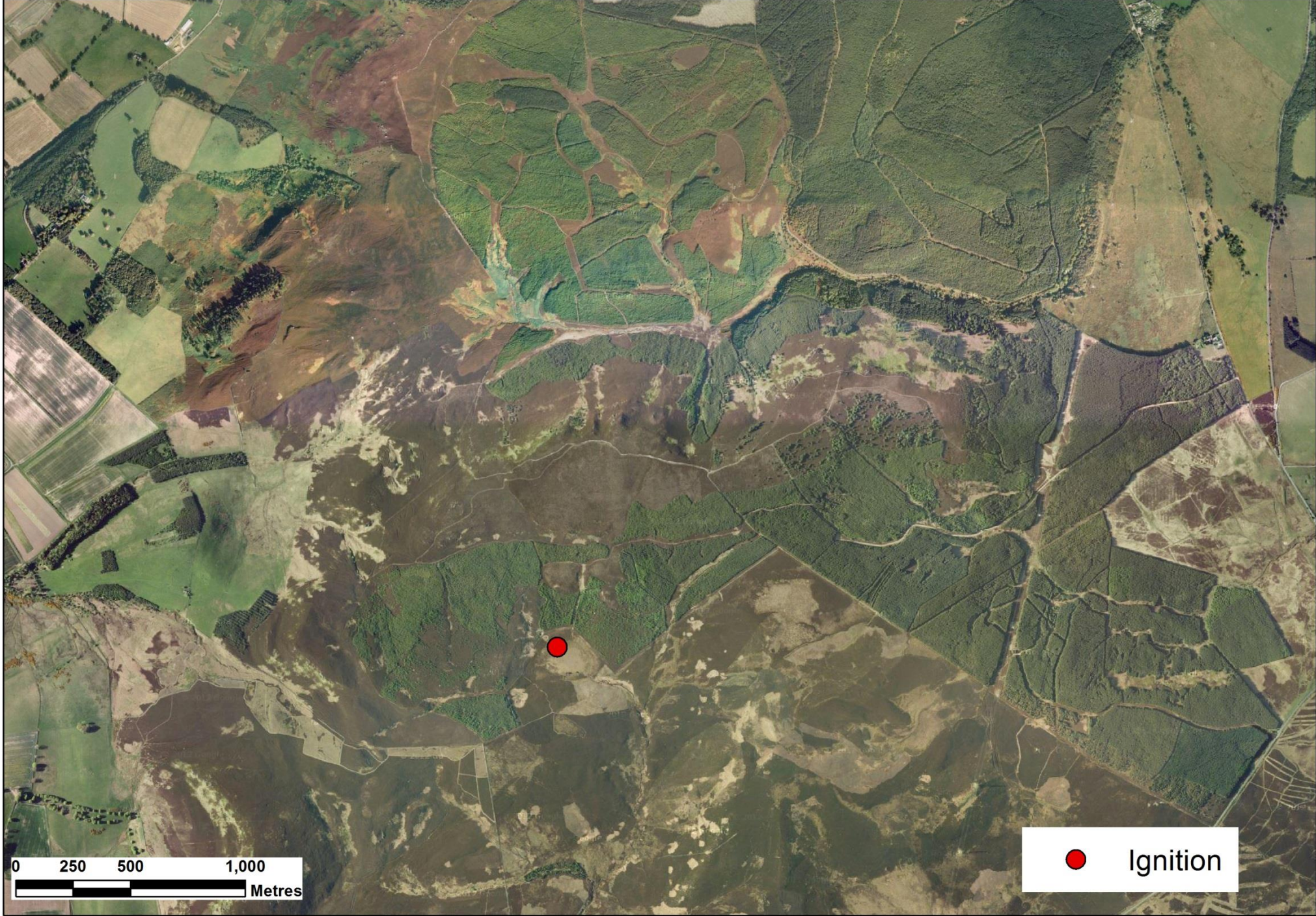










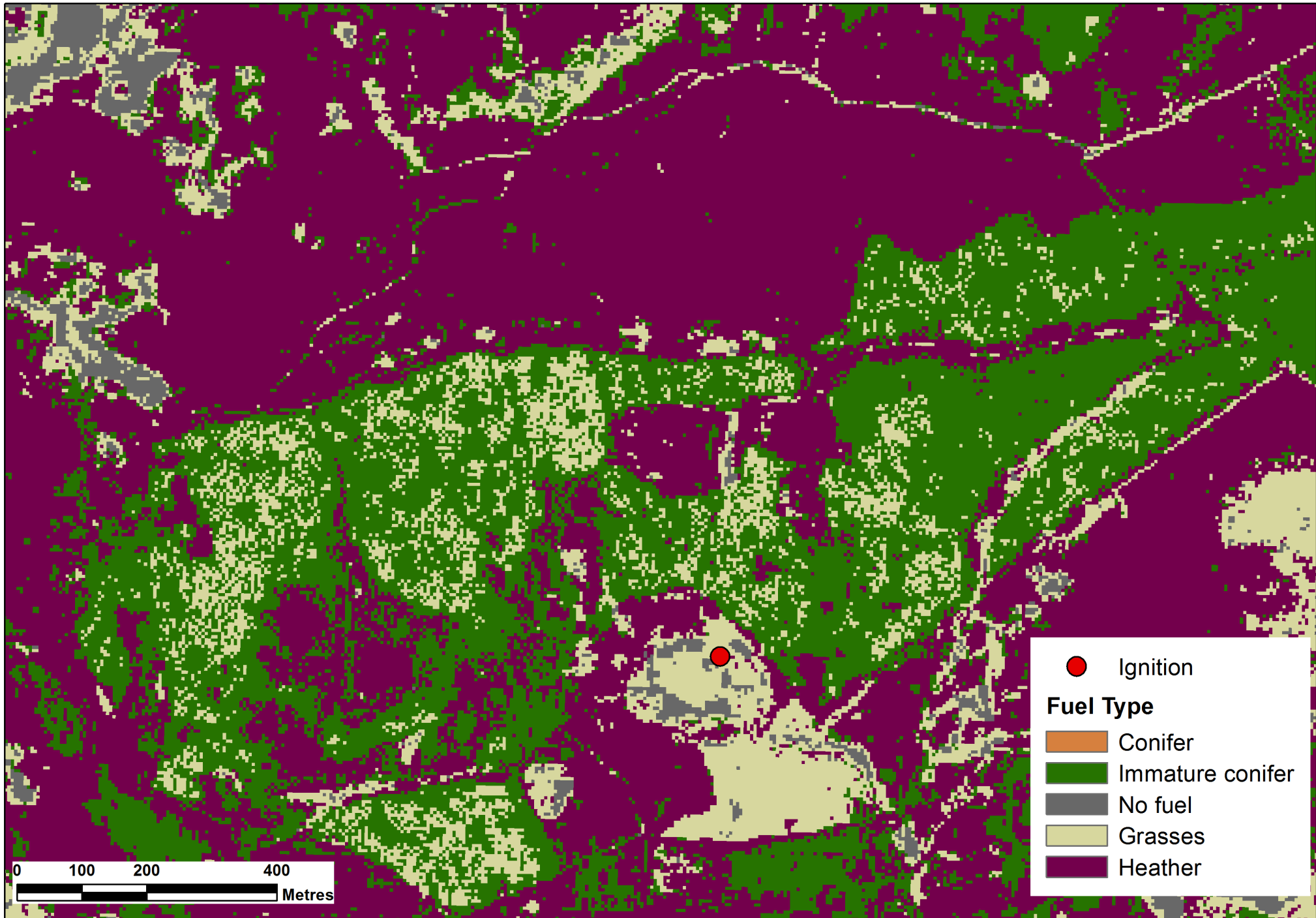


0 250 500 1,000  
Metres

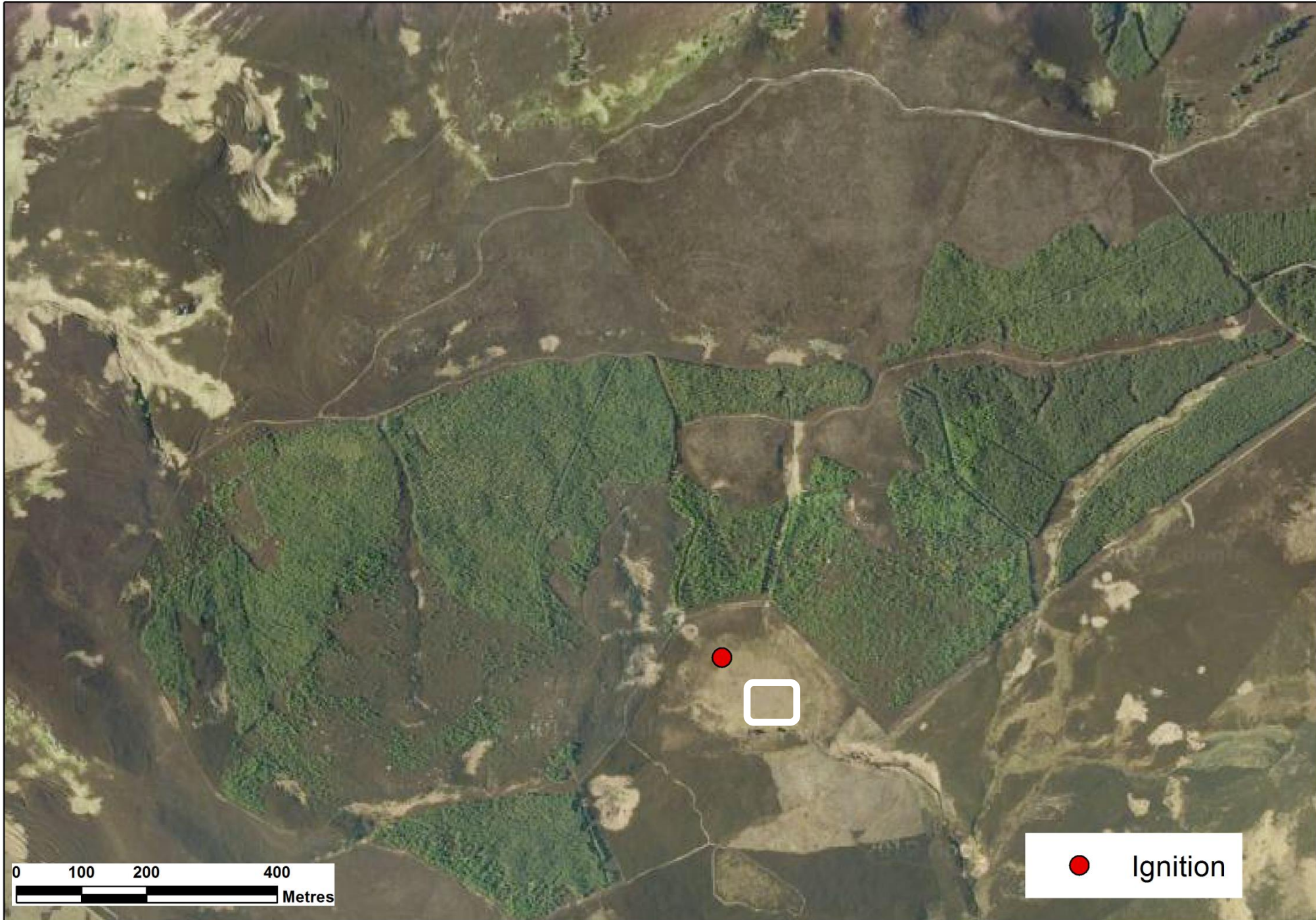
● Ignition











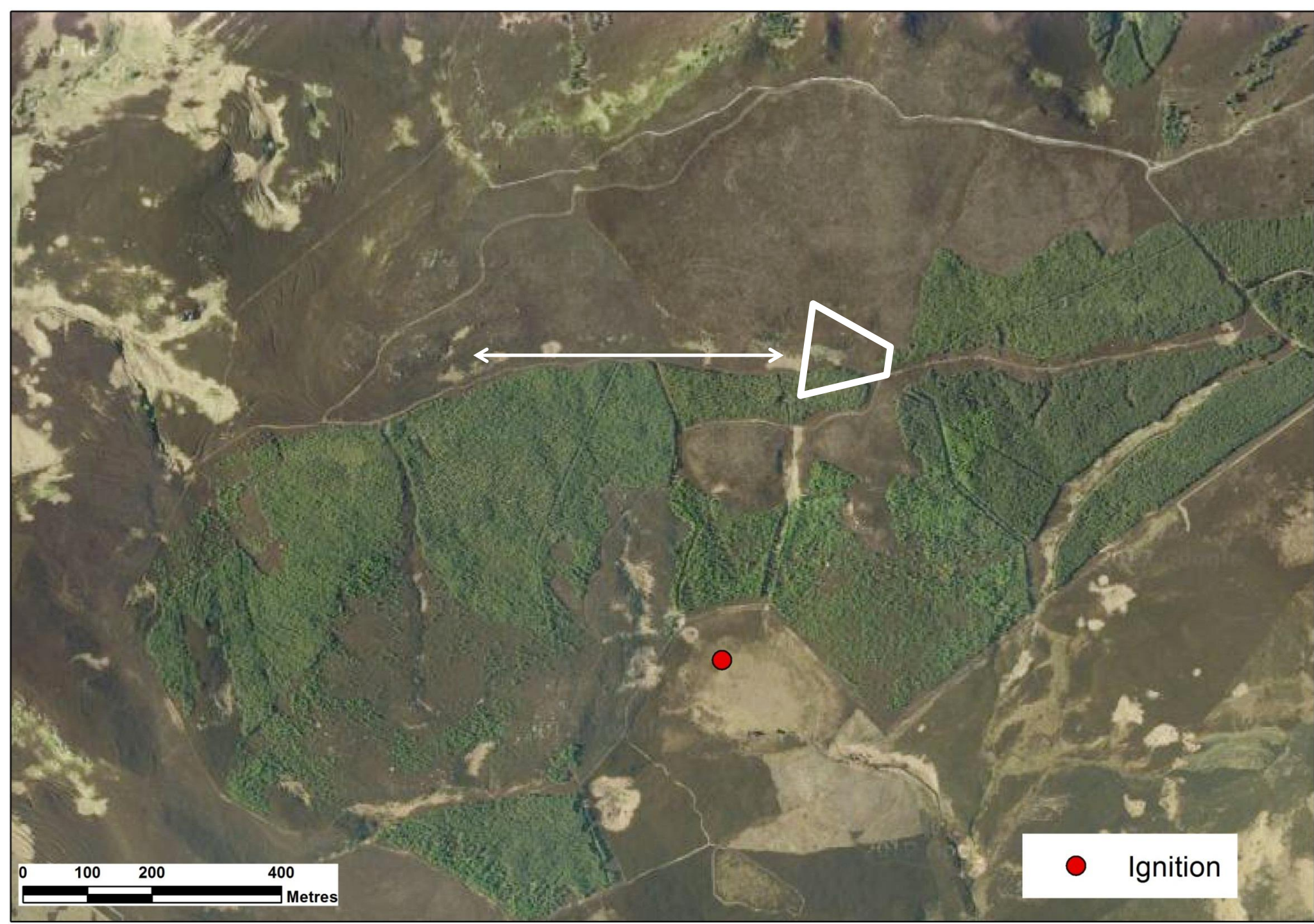
0 100 200 400  
Metres

● Ignition







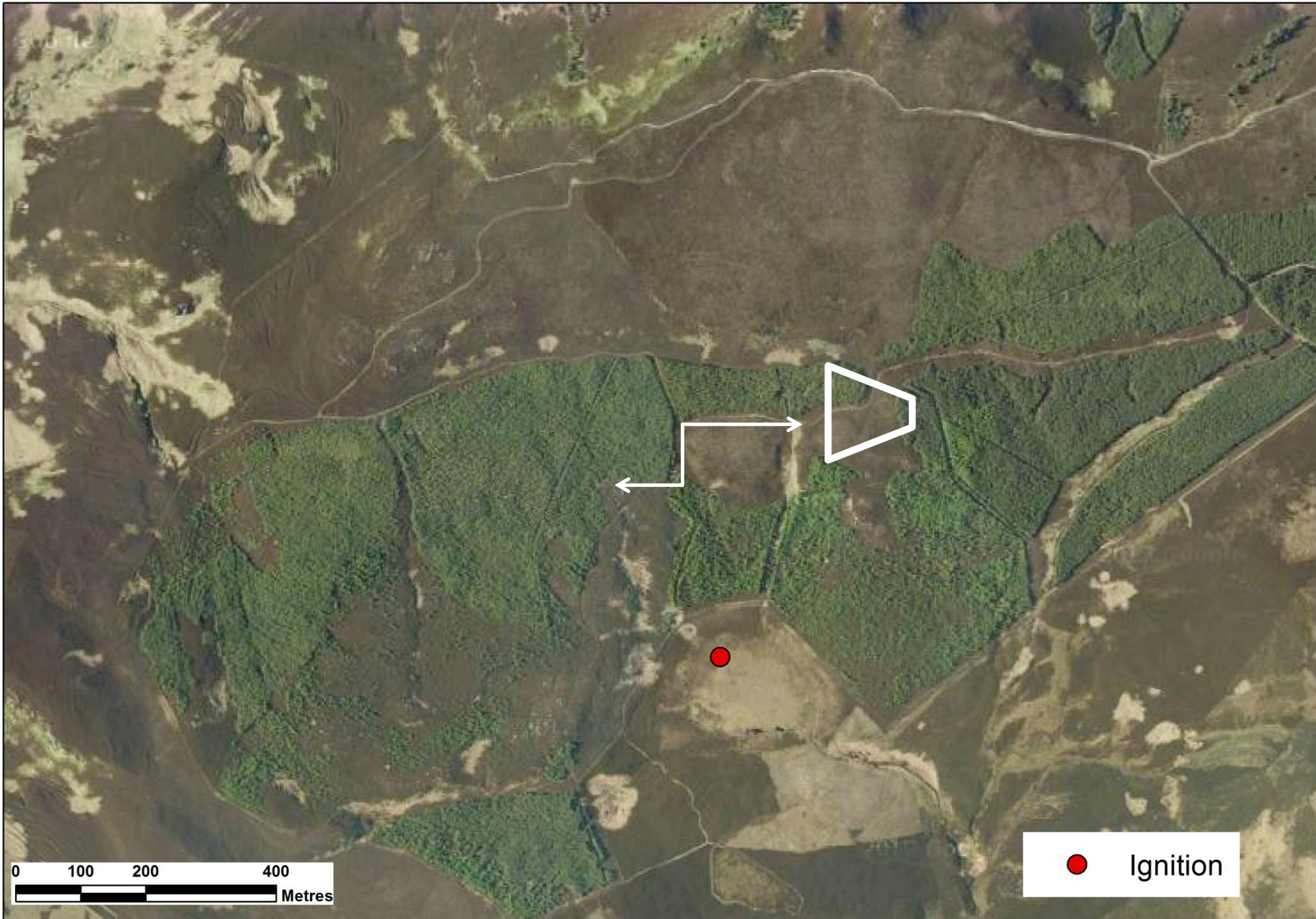


0 100 200 400  
Metres

● Ignition











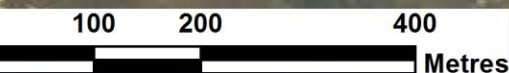
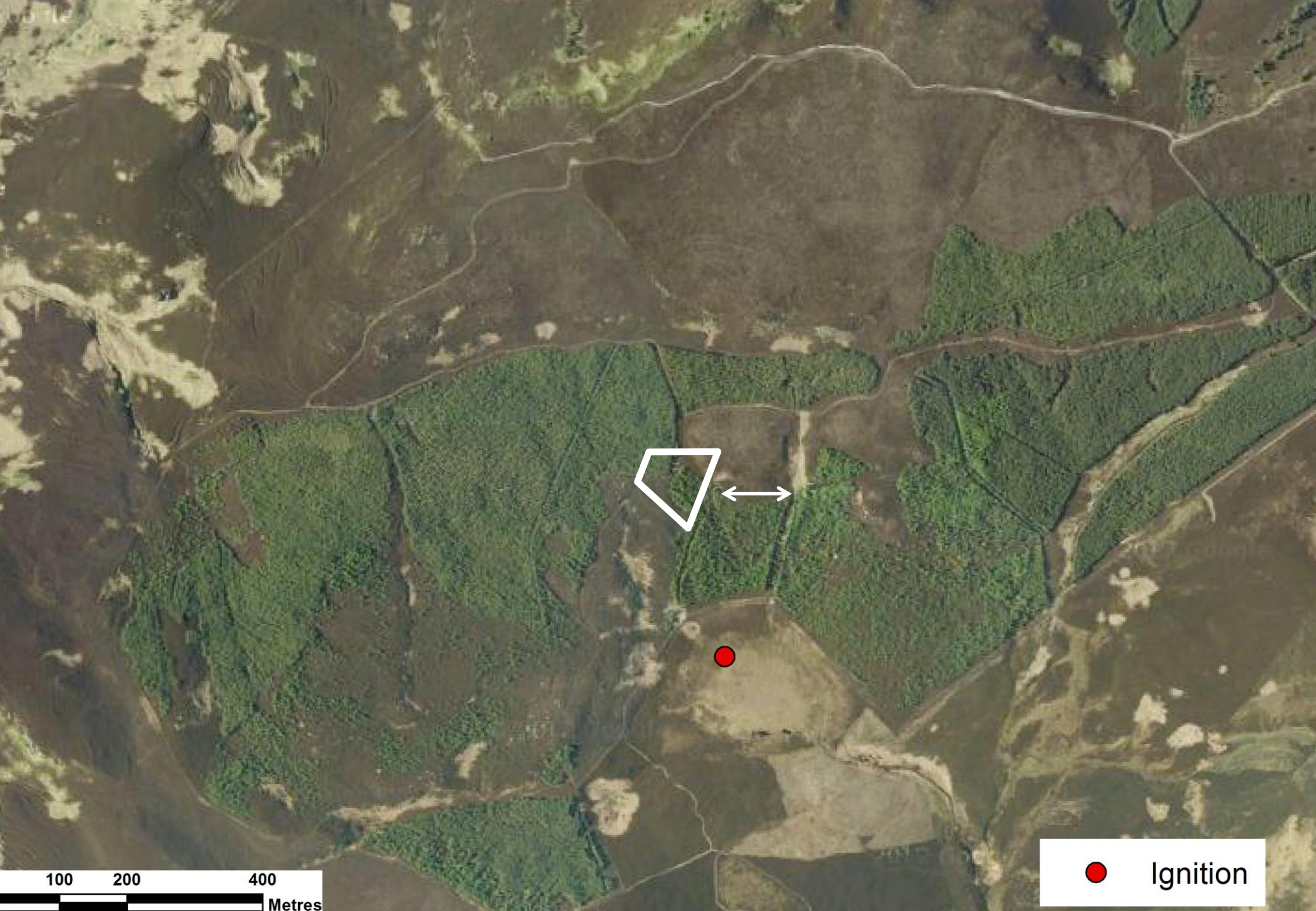










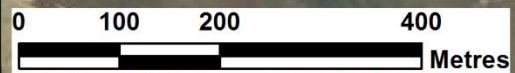


● Ignition









● Ignition











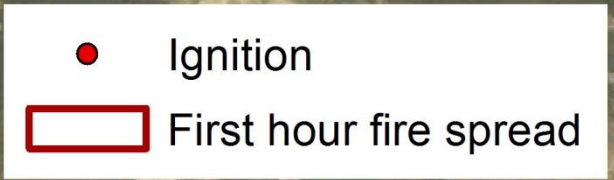
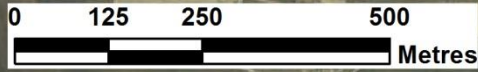
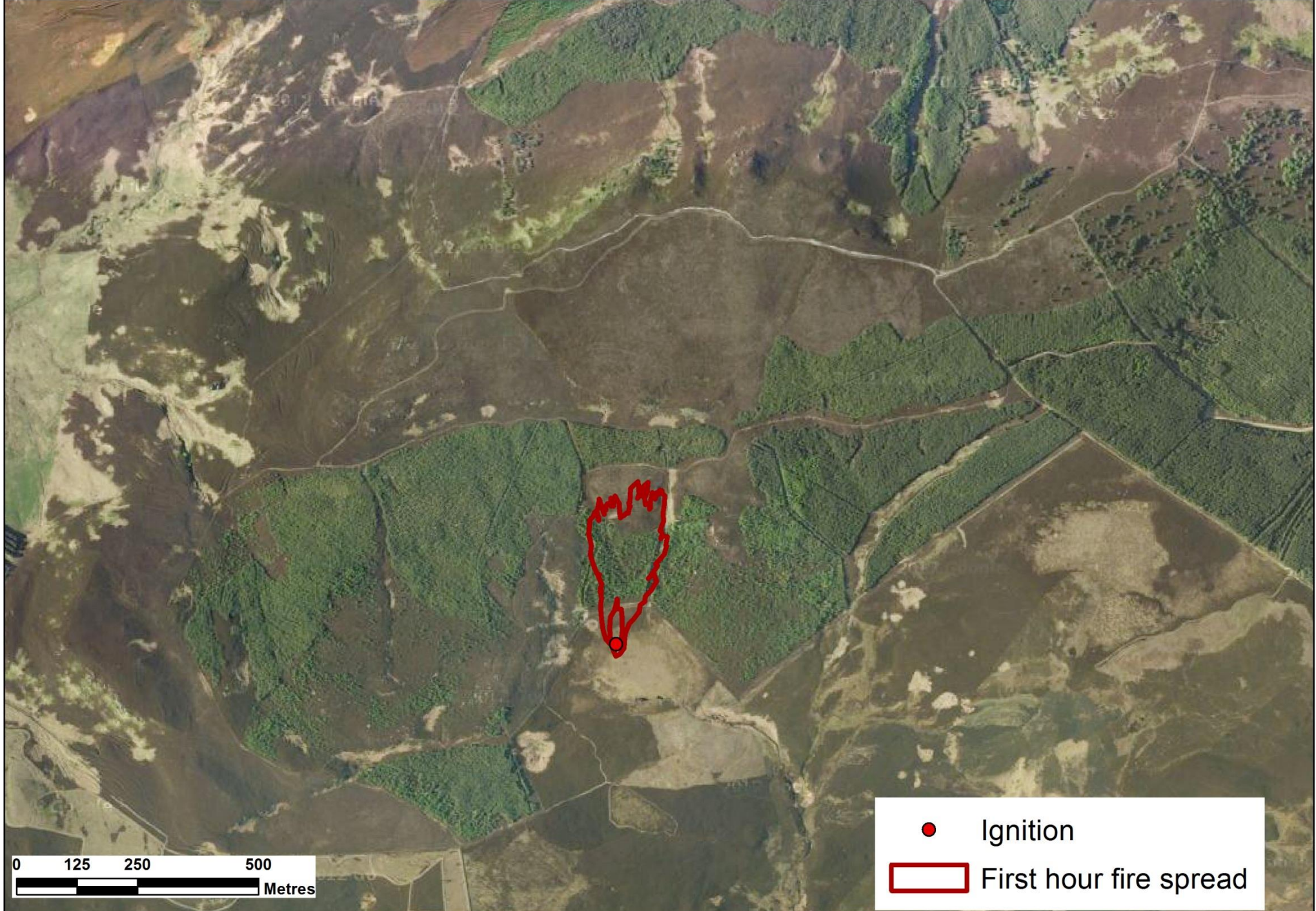


# INFORMATION

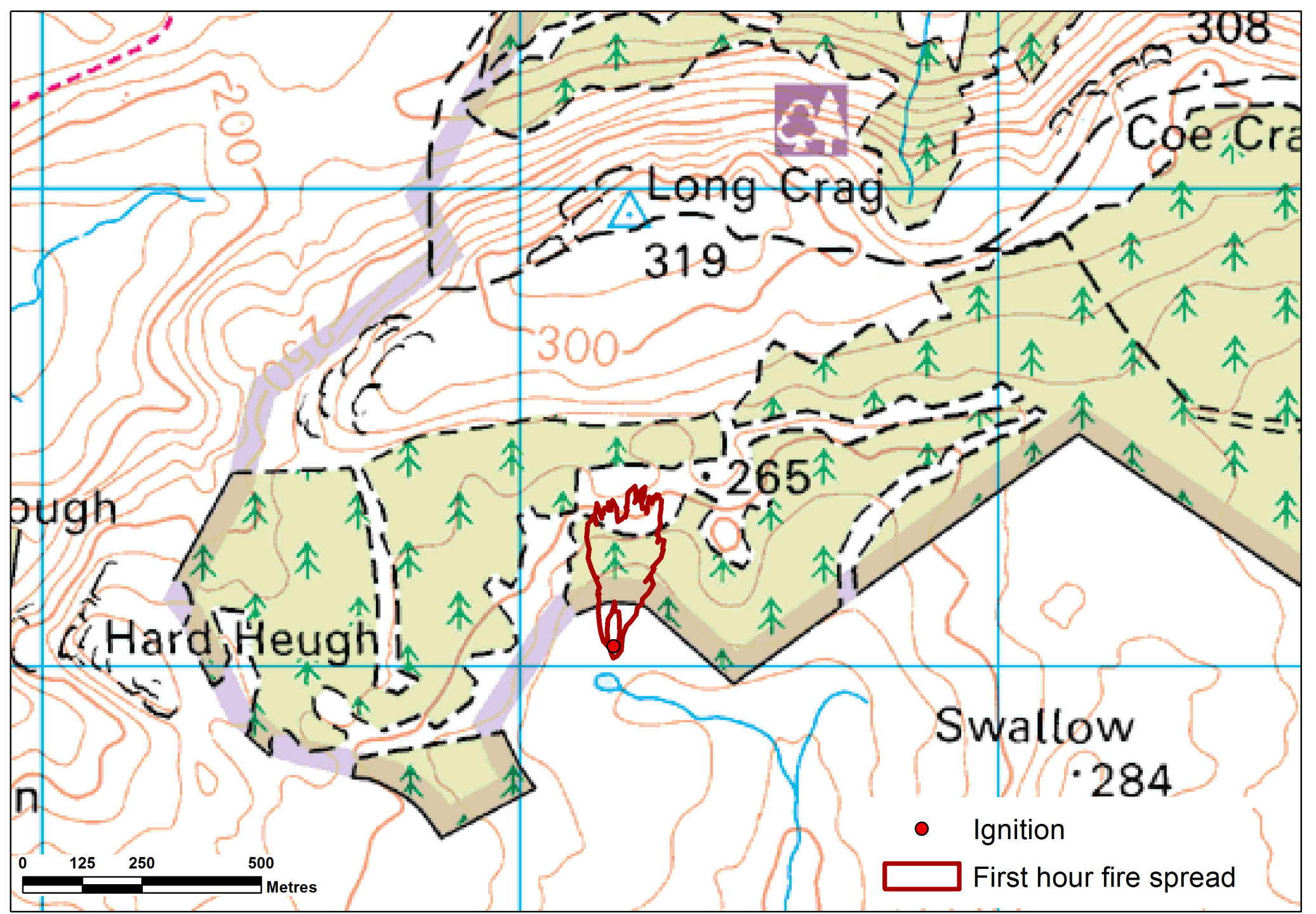
After ONE HOUR...

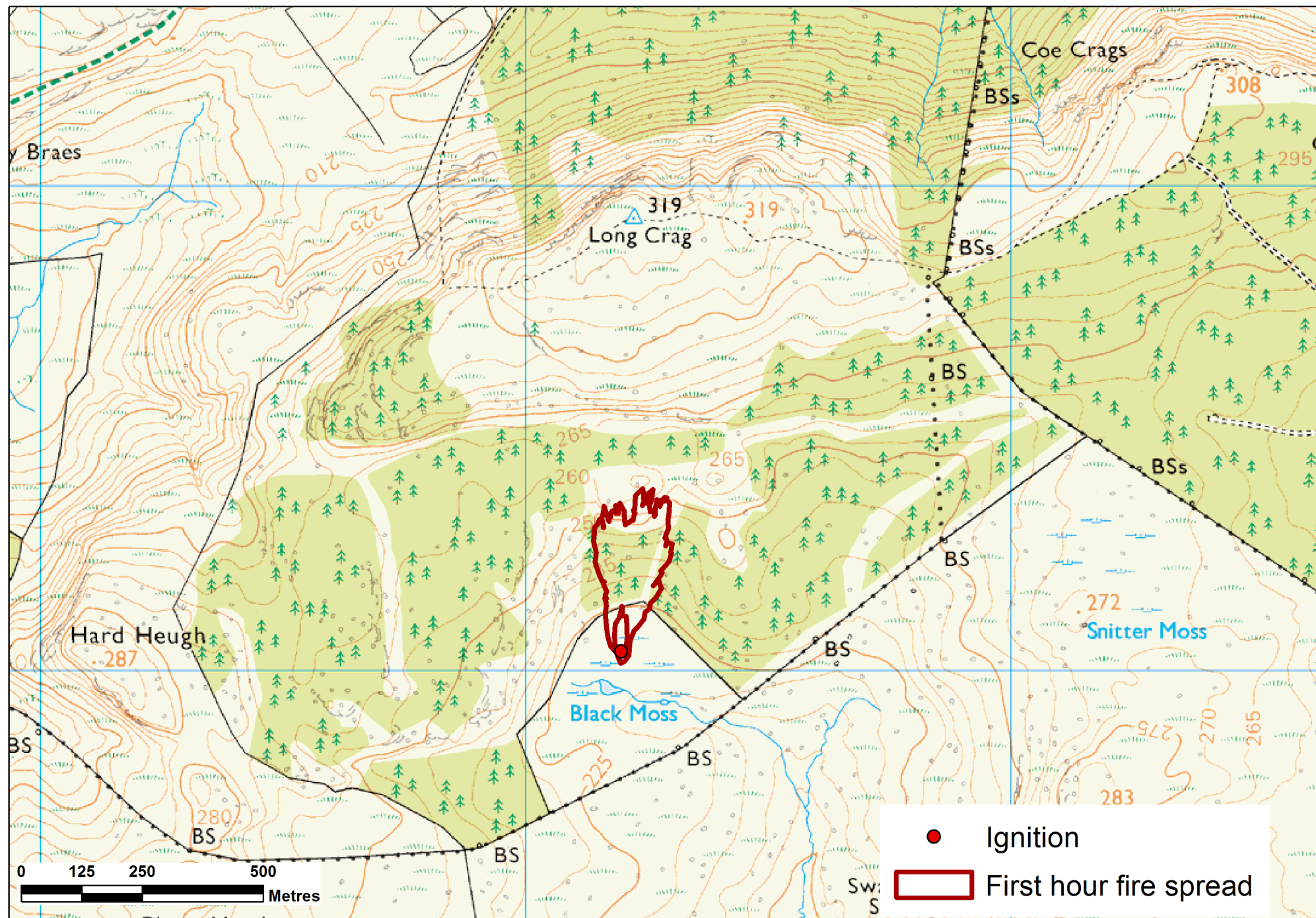














6/27/2012 12:14pm

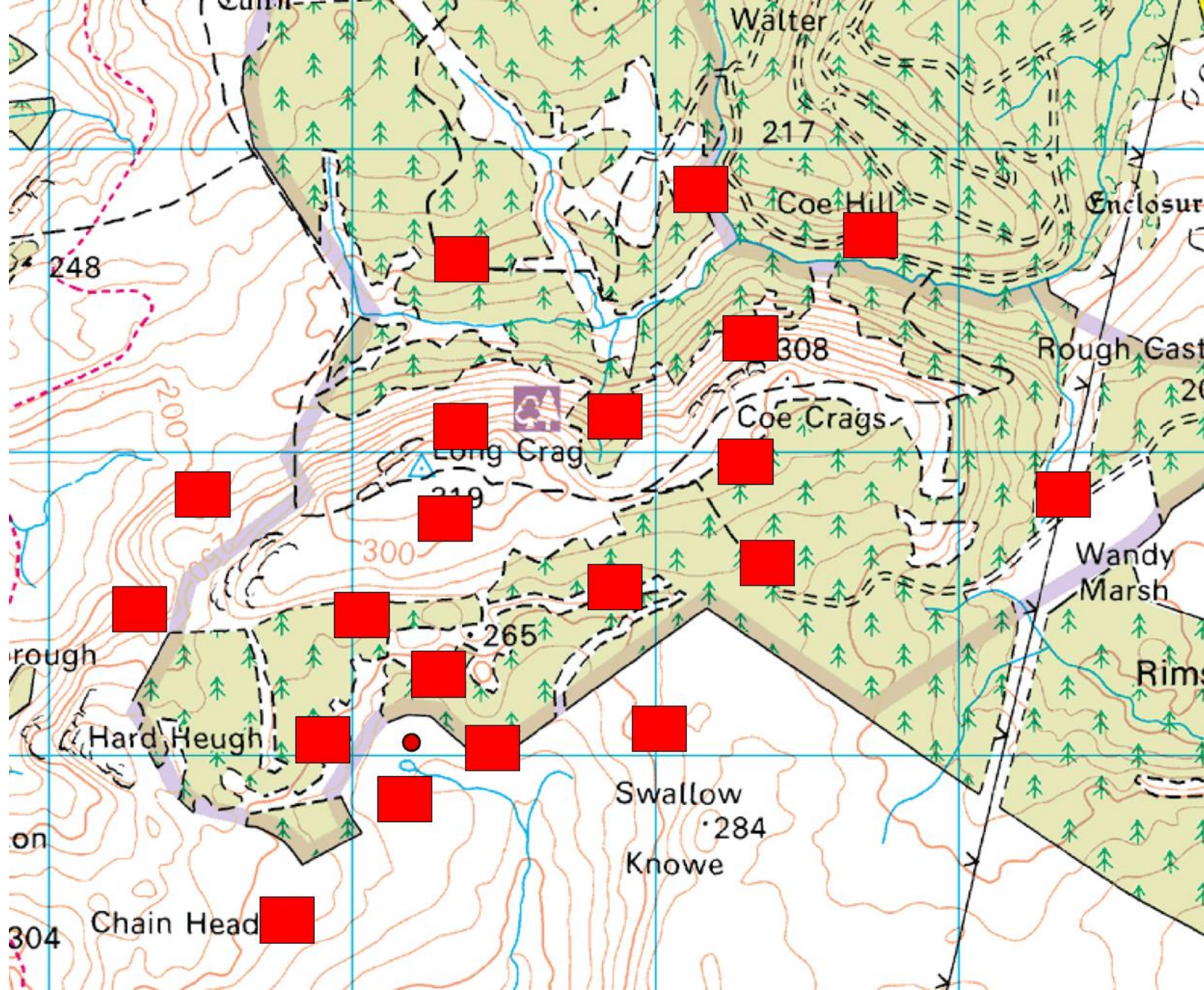
© 2013 Infoterra Ltd & Bluesky  
Data SIO, NOAA, U.S. Navy, NGA, GEBCO  
Image © 2013 Getmapping plc

Google earth

349 m

55° 32.861' N 1° 38.375' W elev 9 m eye alt 1.51 km





# TASK

Map of alignments

Map of fire perimeters (2, 4, 8 hours)

Identify areas of extreme fire activity (within your fire perimeters)

Identify windows of opportunity

Indicate where you might use direct or indirect attack

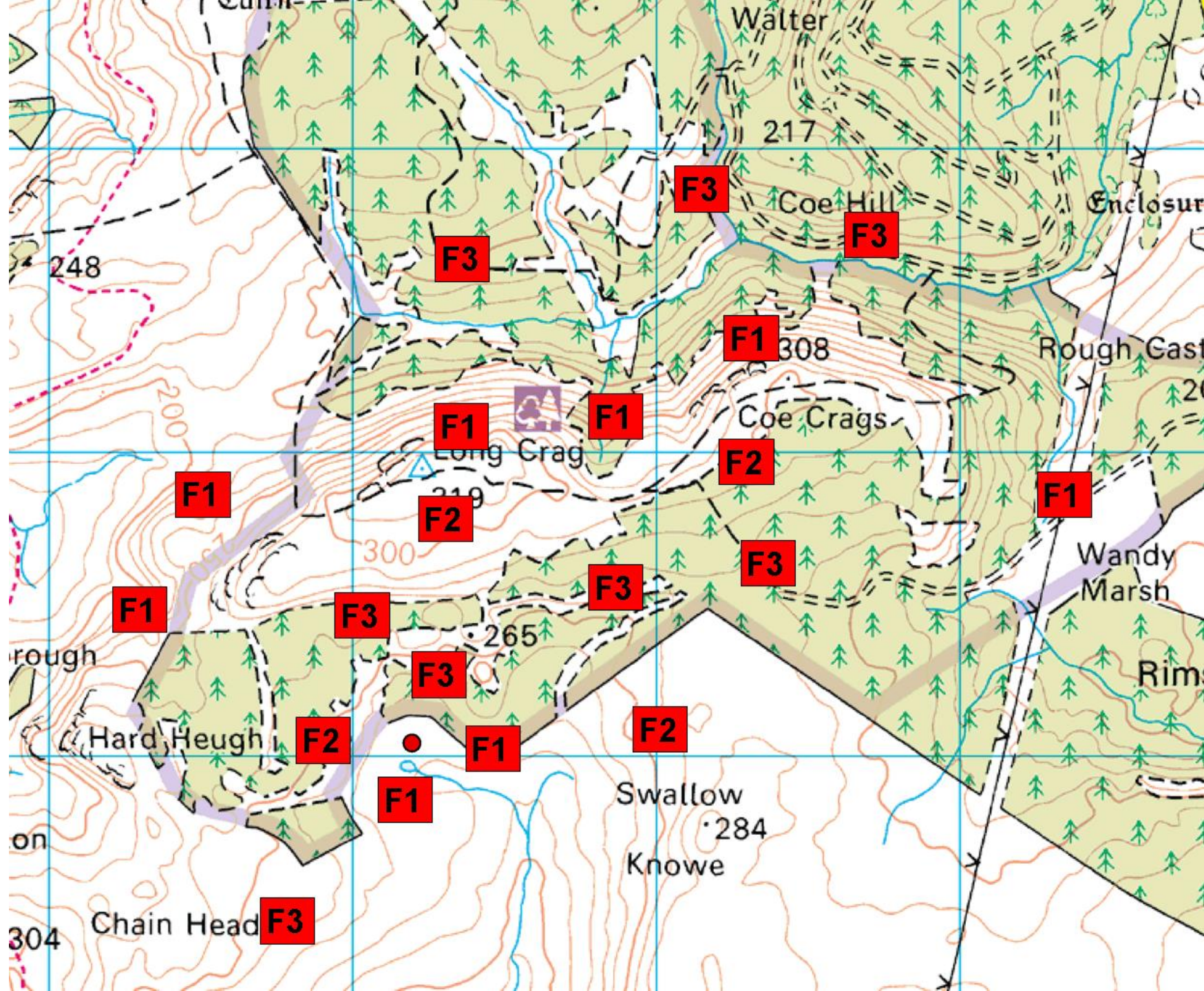


# DO NOT CLICK!!

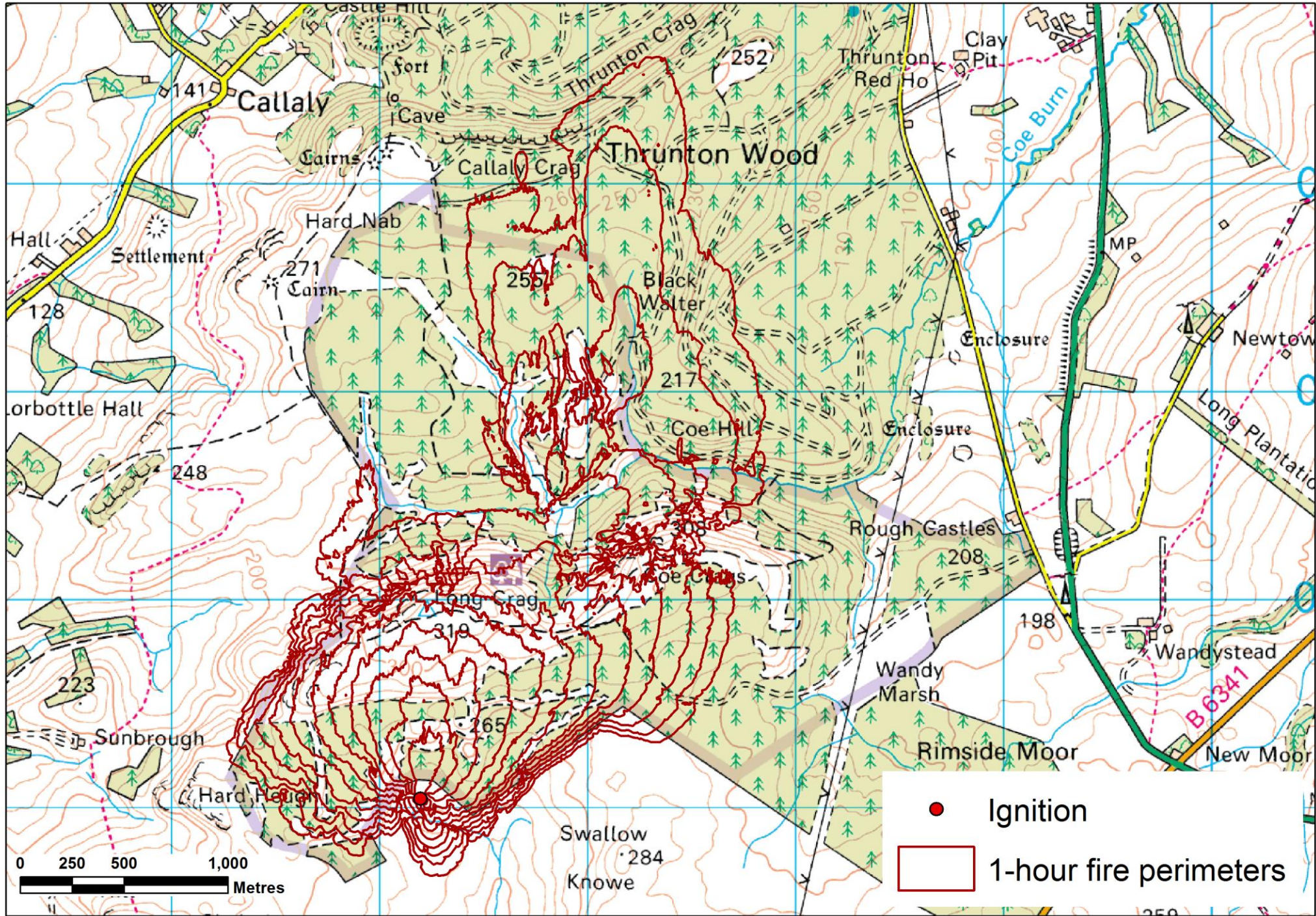
Answers on the next slide!



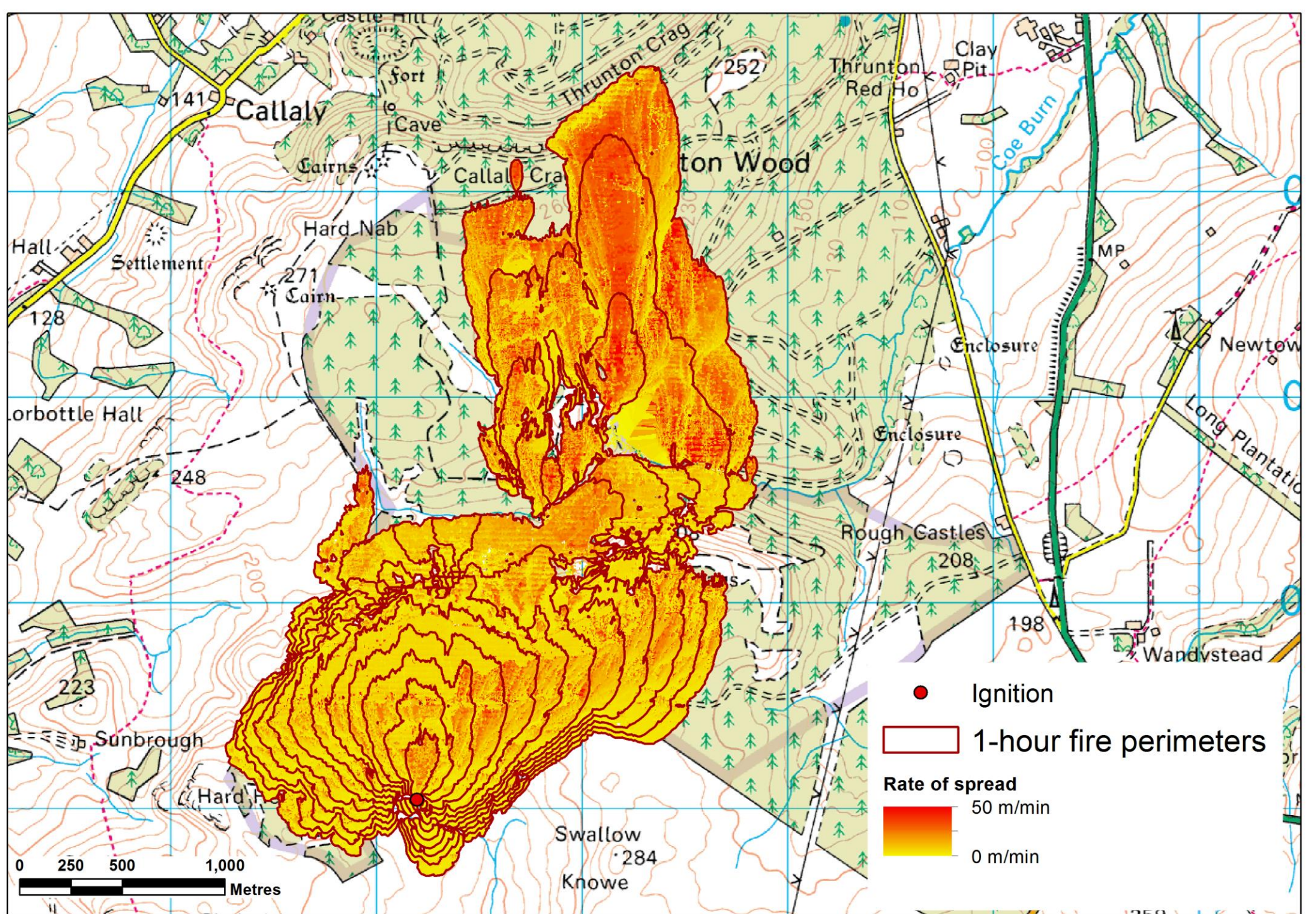




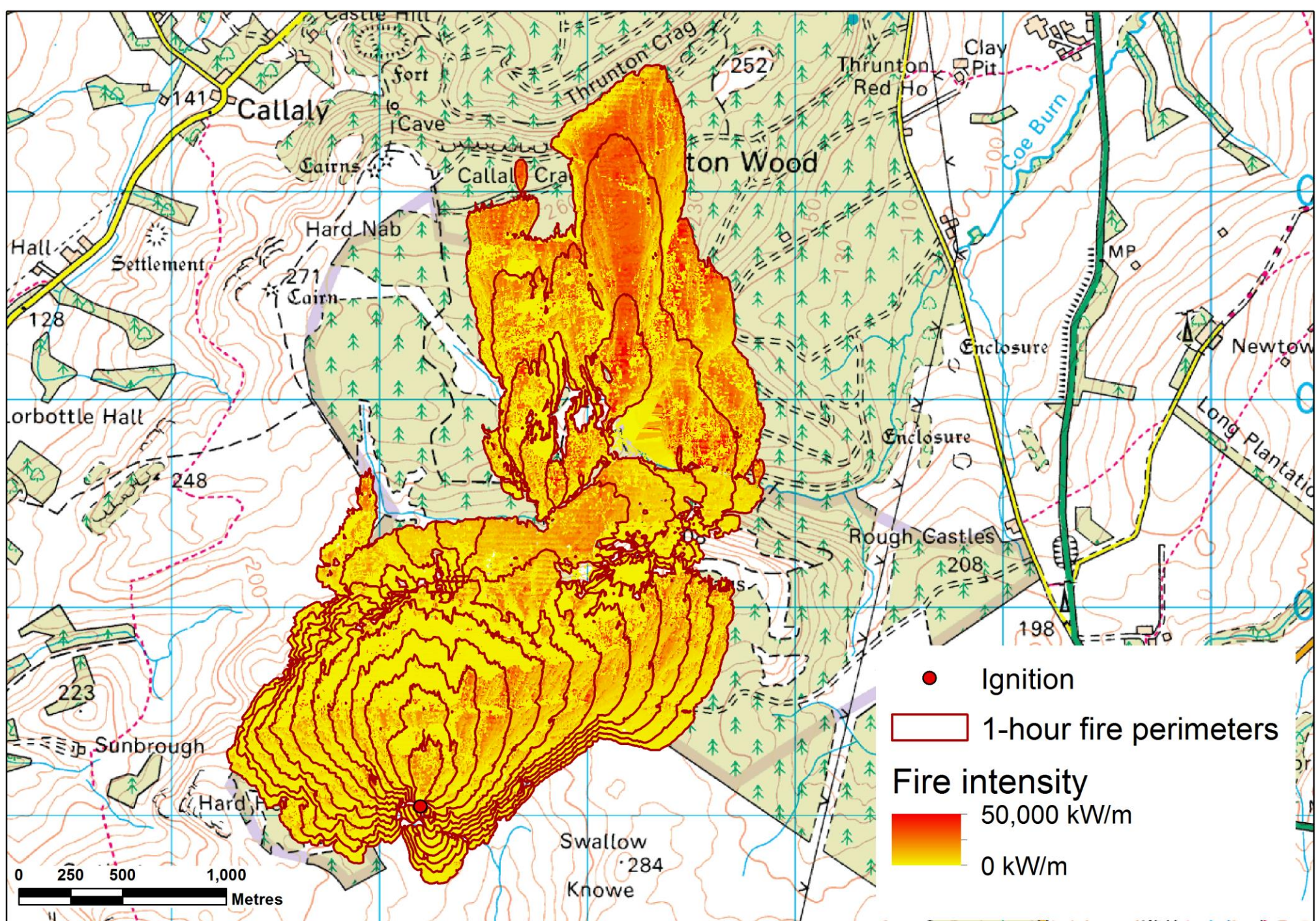




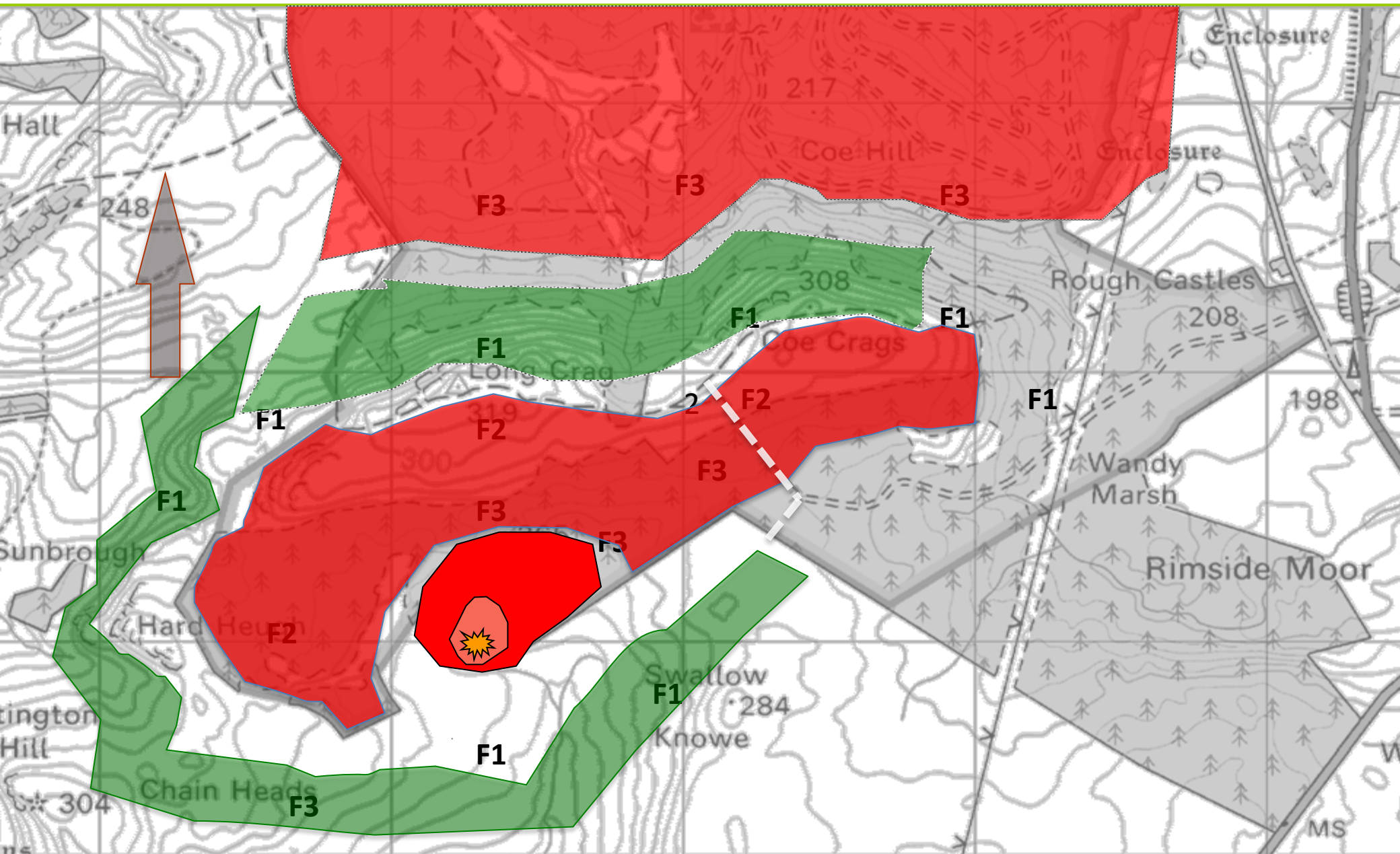




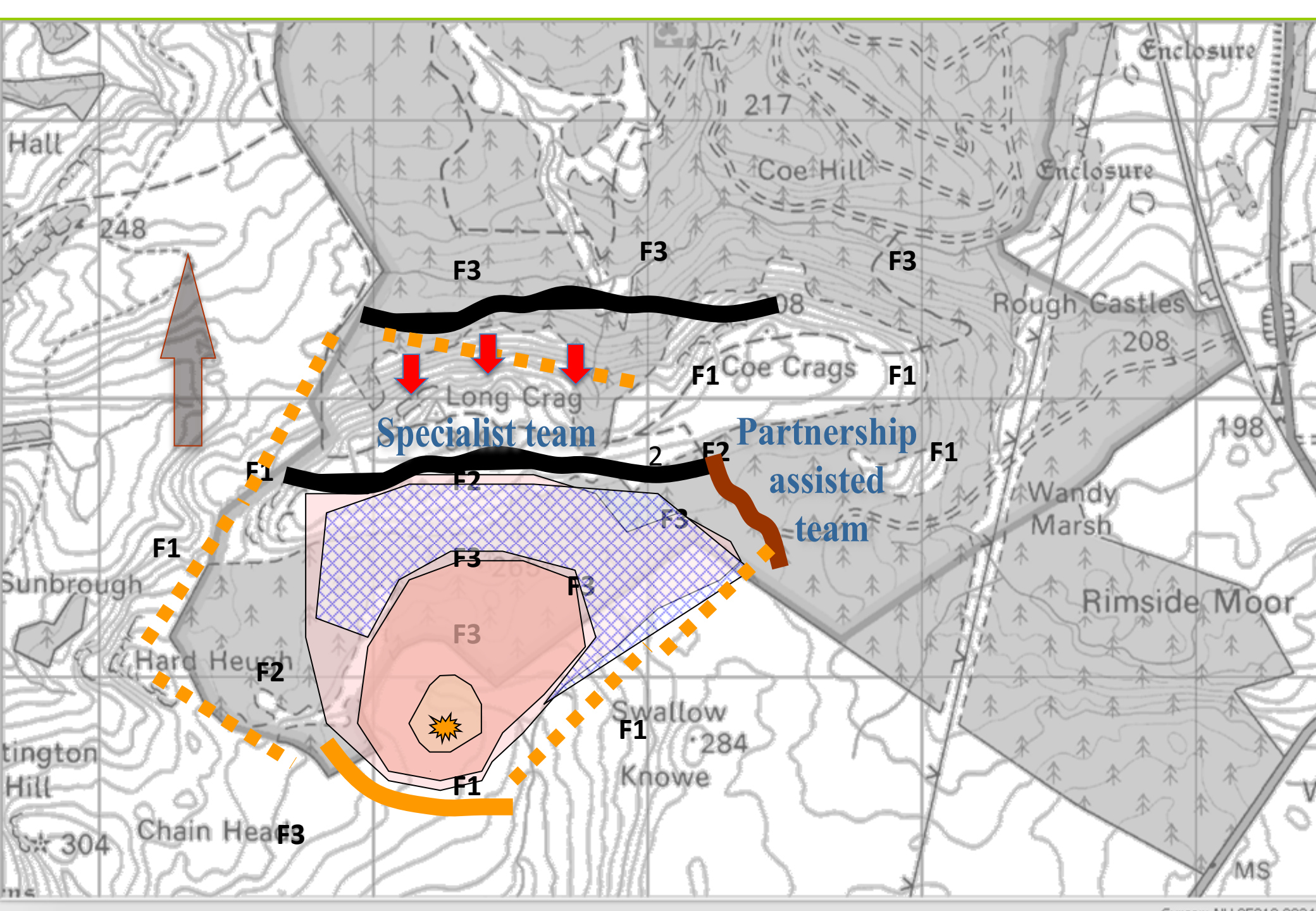












# Questions?

