

# **Swinley Forest Fire**

**2<sup>nd</sup> – 10<sup>th</sup> May 2011**

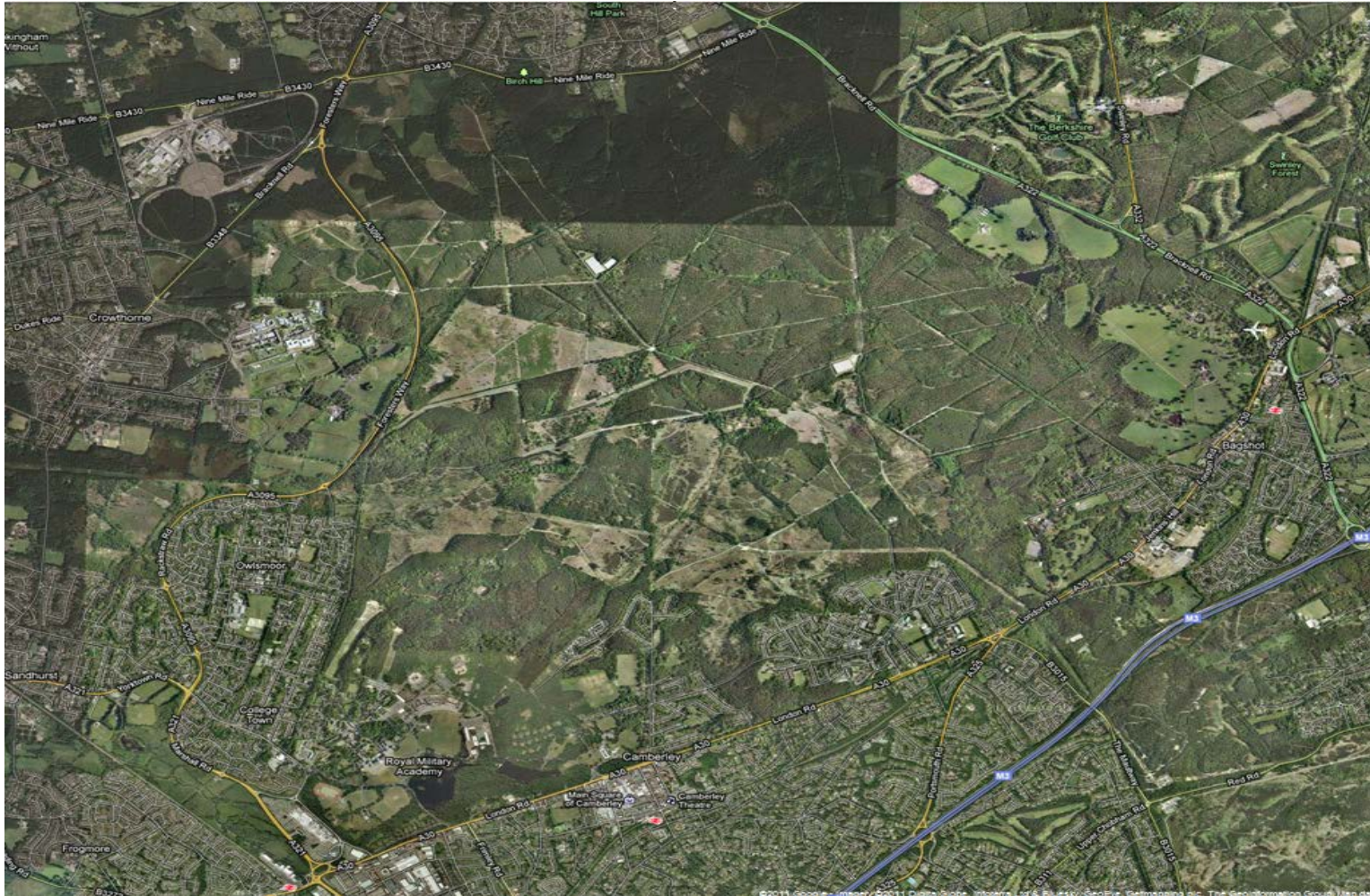
**Berkshire**

Nick Oxborough

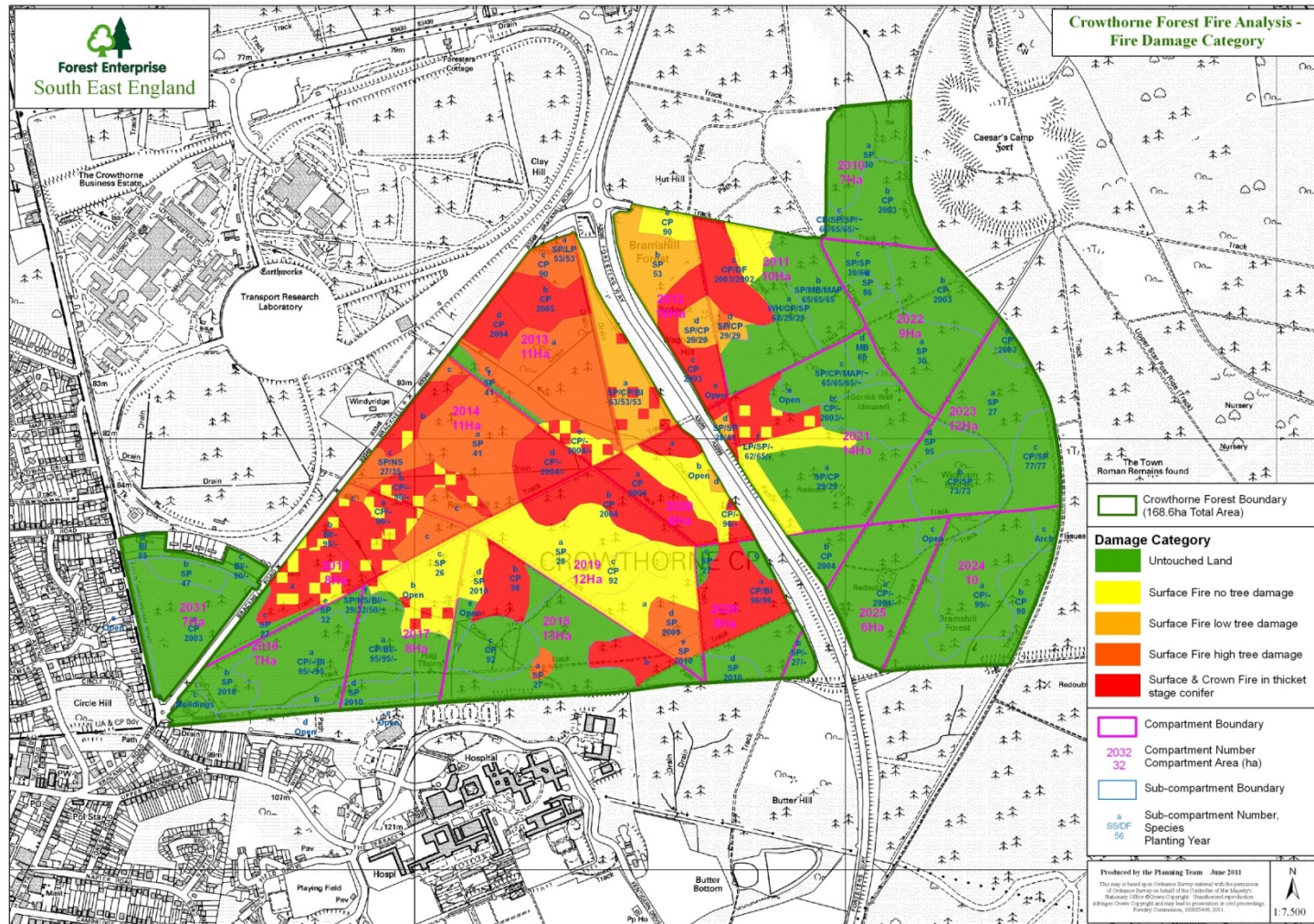
Royal Berkshire Fire and rescue Service



# Context





**MAKING BERKSHIRE SAFER**



**ROYAL BERKSHIRE**  
**FIRE AND RESCUE SERVICE**





# Example of Fuel loading



# Wildfire Management - 4 Phase Strategy

- **Prevention**

- Fuel load reduction (critical)
- Reducing risk of ignition from human resources
- Reducing the flammability of vegetation in dry conditions
- Recognition that potential for damage / disruption from wildfires is as serious as flooding
- Education
- Landscape planning
- Adoption of climate change mitigation and adaptation policies
- Consultation on planning for the rural urban interface



# Wildfire Management - 4 Phase Strategy

- Prepare
  - Annual audit of fuel and assessment of risk
  - Develop tactical plans
  - Training of personnel (fire service & land managers)
  - Asset register & call-off contracts for equipment
  - Active management to reduce fuel loading
- Response
  - Equipment
  - Tactics: allow to burn or extinguish
- Recovery
  - Debrief & evaluation: feedback into local and national policy to improve wildfire resilience